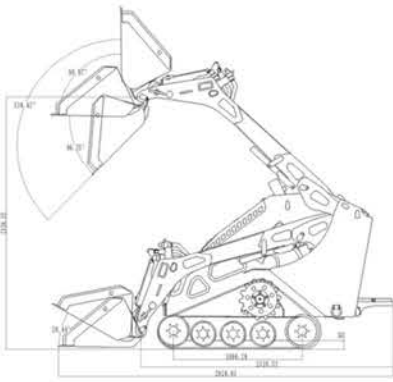
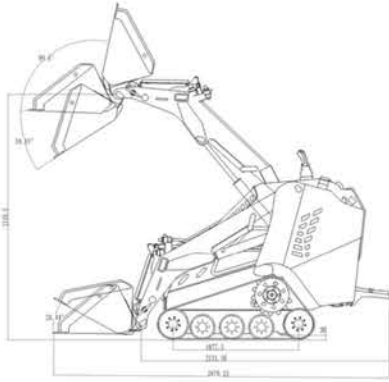


ENGINE	NARROW	WIDE
Engine Type	Water-Cooled, 4 Cycle Diesel Engine with 3 Cylinder, EPA Tier 4	
Model Name	KUBOTA D1703-M	
Total Displacement	100.5 cu.in. (1.647 L)	
Engine Power SAE J1995 Gross	24.8 HP (18.5 Kw/rpm)	
Max. Torque	97.4Nm (71.8lb-ft) @ 1,500 rpm	
Rated Speed	2,200 rpm	
Low Idling Speed	1,100 rpm	
DIMENSIONS		
Overall Length-Transport	114.1" (2,897 mm)	114.6" (2,911 mm)
Overall Length (W/O Bucket)	87.9" (2,233 mm)	87.3" (2,218 mm)
Overall Height	65.4" (1,660 mm)	63.9" (1,623 mm)
Overall Width (W/O Bucket)	36" (914 mm)	42" (1,067 mm)
Wheelbase	42.4" (1,078 mm)	42.6" (1,082 mm)
Hinge Pin Height at Max. Lift	84.8" (2,150 mm)	82.3" (2,090 mm)
Reach at Max. Lift and 45° Dump	63.6" (1,615 mm)	57.8" (1,467)
Track Width STD.	7.8" (200 mm)	9.1" (230 mm)
Ground Clearance (in the center)	11" (279 mm)	
Ground Clearance (on the side)	3.7" (93 mm)	
Angle of Departure	31°	
Operating Weight (W/O Operator)	3,638 lbs (1,650 kg)	
Rated Operating Capacity (35%)	1,200 lbs (544 kg)	
Tipping Load	3,429 lbs (1,555 kg)	
PERFORMANCE		
Attachment Mounting System	CII (Common Industry Interface)	
Travel Speed (Fwd/Rev)	4.94 mph (7.96 km/h)	
Battery Capacity	12V, 60AH	
Main Auxiliary Hydraulic Flow (High Flow)	12.68 gal/min (48 L/min)	
Main Auxiliary Hydraulic Pressure (High Flow)	2,755 psi (19 MPa)	
Secondary Auxiliary Hydraulic Flow (Low Flow)	2.6 gal/min (9.9 L/min)	
Secondary Auxiliary Hydraulic Pressure (Low flow)	3,045 psi (21 MPa)	
Driving System Operating Pressure	5,801 psi (40 MPa)	
SERVICE AND FILL CAPACITIES		
Fuel Tank Capacity	8.45 gal (32 L)	
Hydraulic System	8.45 gal (32 L)	



SS1200
Wide



SS1200
Narrow



SPARTAN **SS1200**
MINI TRACK LOADER



SS1200 Narrow

36" Wide
Same Power,
More Accessibility.



SS1200 Wide

42" Wide
More Stability,
More Potential.

ELEVATE YOU INTO WARRIORS

Unleash the Power, Empowering Every Move.

1,200lbs Rated Operating Capacity



High Flow Option 15.9gal/min

Kubota

Engine Kubota D1703

24.8 HP 18.5 kW Power

97.4 Nm 71.8 lb-ft TORQUE

2,200 rpm

Unmatchable Fuel Efficiency

 **POCLAIN**
Hydraulics

Driving Motor

POCLAIN PLUNGER DRIVING MOTOR

Constant High Pressure Output

Unbeatable Breaking Force



Tank Style Chassis System

The independent chassis, with a tank-style design, evenly distributes weight for enhanced stability and durability, while anti-vibration tracks improve comfort and reduce operator fatigue.

Heavy Duty Cast Iron CII Mounting plate

With strong load resistance and wear reduction, this design enhances durability, minimizes maintenance, and ensures seamless compatibility with CII and other brands.



Powder Coated Finishing

With a smooth, rust-resistant finish that resists scratches, it maintains a lasting, professional look for a tough and polished appearance.

Heavy Duty Boom

The heavy-duty boom with protected internal hydraulic lines offers enhanced durability, making it ideal for high-intensity tasks with greater longevity and reduced maintenance needs.



Higher Platform Clearer View Reduced Blind Spots

Easily change attachments to adapt to any task, staying in control and fully aware of everything happening on your job site.



Hydraulic Joystick Control

The ergonomic grip fits the natural hand curve, while the intuitive dual-hand layout and multi-function joystick controls simplify operation and reduce unnecessary movements.



Digital Monitor Screen

- Displays real-time data
- Clear and intuitive for operation
- Oil Pressure, Engine Speed, Coolant Temperature, Battery Volts, Hours



Standard Dual Auxiliary

Dual auxiliary ports offering both 12.7 GPM high and 2.6 GPM low flow, delivering powerful performance with precise control. Quick-release mechanism ensures effortless attachment changes.



Parking Lock & Boom Lock

The parking lock secures the machine during breaks, while the boom lock prevents unintended movements for added safety.



Secure Tie Down Point for Transport

Provides secure anchor points to keep the loader stable during transport, preventing movement or shifting on trailers.



Emergency Kill Switch

Instantly shuts down the machine in case of emergencies.

LED Head Light

Boost visibility and safety in low light, ensuring confident navigation in the dark.



3-Point Contact

Guarding you on every climb, the 3-point contact system ensures safety when getting on and off.



Multi-Functional Valve

Hydro Control's upgraded multifunctional valve delivers precision micro-operation for smooth, responsive control.



Comfortable Working Platform with Cushion Protect



Durable and Anti-Vibration Tracks



12V Charging Port

Hose Guide

Protects hoses from external impacts and friction wear, ensuring proper alignment for smooth hydraulic flow and extended lifespan.



Floating Function



**Easy Access to The
Engine Bay**



Oil Change?

**Just Take off
One Panel !**



**Grease Point
Across The Body**



**Service Free Rollers
Grease Tensioning Tracks**



2-Years / 2,000hrs Warranty*

***Includes Labour and Parts**

Comprehensive Coverage

The warranty covers both labour and parts, ensuring your machine is protected from manufacturing defects or unexpected issues during the warranty period.

Extended Peace of Mind

Whether you work long hours or over multiple years, this dual-condition warranty ensures reliability and support for up to 2 years or 2,000 hours of use, whichever comes first.

Dealer Support

Experience exceptional service with VMENG's expert dealers, backed by factory training and efficient inventory management. Enjoy comprehensive support, prompt assistance, and access to reliable full-time technicians, all supported by a well-stocked inventory.



Angle Broom



Dozer Blade



Snow Blower



Sweeper



4in1 Bucket



Hammer



Lawn Mower



Soil conditioner



Pallet Fork



Trencher



Auger



Digger



Root Grapple



Stump Grinder



Log Grapple



Rock Bucket



Leveller



Rotary Plow



Backhoe



Mixer

**Unleash the full potential of Spartan with
our wide range of official Attachments!**



For a full list of attachments visit www.vmengmachinery.com